

WHAT IS TRUESEEN™

With our TrueSEEN™ solution, having an eye that can manage your entity's main processes and cost/profit centers is no longer a dream. It is an innovation by MayzBXL that uses real time location systems based on the UWB RF (**ultra-wide band radio frequency**) technology to see, control and react to the movement of things. This goes along with some advanced applications and intelligent technology to apply the **IoT (Internet of Things)** in your organization as a step towards artificial intelligence. Our product is a cutting edge management tool, based on proven ESA – European Space Agency technology combined with smart sensors having bi-directional communication features and CPU-like responsive work. TrueSEEN™ has a cm accuracy **tracking, monitoring, reporting and controlling capabilities for any movable item.** Your entity can be transformed into a fully automated environment increasing efficiency of workflow, reducing equipment or personnel losses and cost control

In emergency situations
EVERY SECOND
can make a difference



With our advanced Robot-Like solution you can make sure your staff and equipment are located and ready for action in the fastest time possible



Why is
TrueSEEN™

cutting-edge technology the right option for your business?

It provides you real-time data about the locations and movement of your equipment and personnel

Provides you with the control and support you need to manage your facility operations like clockwork

Empowers you to make faster and more reliable decisions

Enhance quality of communication and reduce cost of other communication channels

Simplifies the work of your management and staff while making their time and work more efficient

Offers better stock and resources utilisation

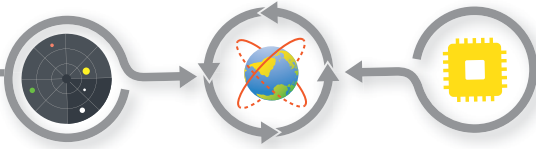
Shadows staff and customers resulting in the highest levels of satisfaction

Provide customers with best level of care and reduced waiting time

Improves people's health and in some cases saves lives

Creates a strong unique selling proposition for your facility and enhances your reputation

Our user friendly software can be easily operated by non-technical staff



TrueSEEN™ vs. Other technologies

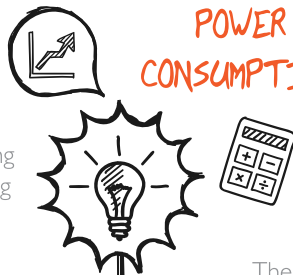
One of the important reasons that makes TrueSEEN™ stand out is the cost of acquiring similar systems is too high. To install similar RTLS solutions, the whole IT infrastructure has to be replaced in order to accommodate the technology. Why? Because existing RTLS systems depend on signals such as WiFi and Bluetooth. Here are some of the major issues and limitations that hinder progress and usage of such technologies:

- They attenuate: Signal weakens as distance increases, until signal is gone. So the further the distance, the weaker the signal. Therefore you have to strengthen the WiFi signal everywhere in your building by installing a higher density of access points, wiring connections and repeaters.
- UWB channels are less congested and provide greater location accuracy. Wi-Fi based RTLS tags generate noise and degrade Wi-Fi quality causing enough congestion to negatively impact application communications.
- Bluetooth has a very short range making coverage of large areas forbiddingly expensive.

TrueSEEN™ provides the key factors for successful indoor location and control systems

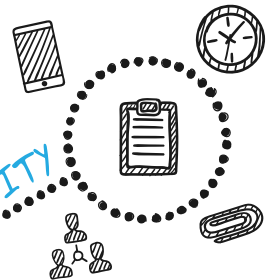
With the world lowest power consumption for UWB tags, reaching 80 nA, which can last for a very long time

POWER CONSUMPTION



The amount of mobile tags which can be tracked are ~20,000 nodes per 200m²

DENSITY

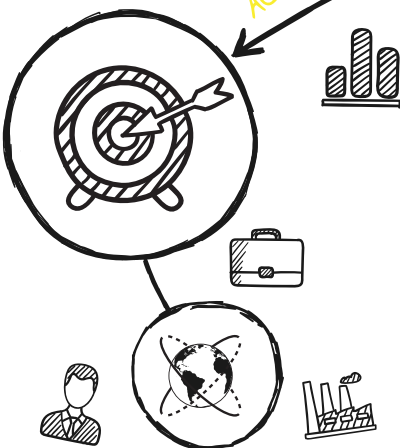


Up to 200 Meters (up to 600m with booster)

RANGE



ACCURACY



COST



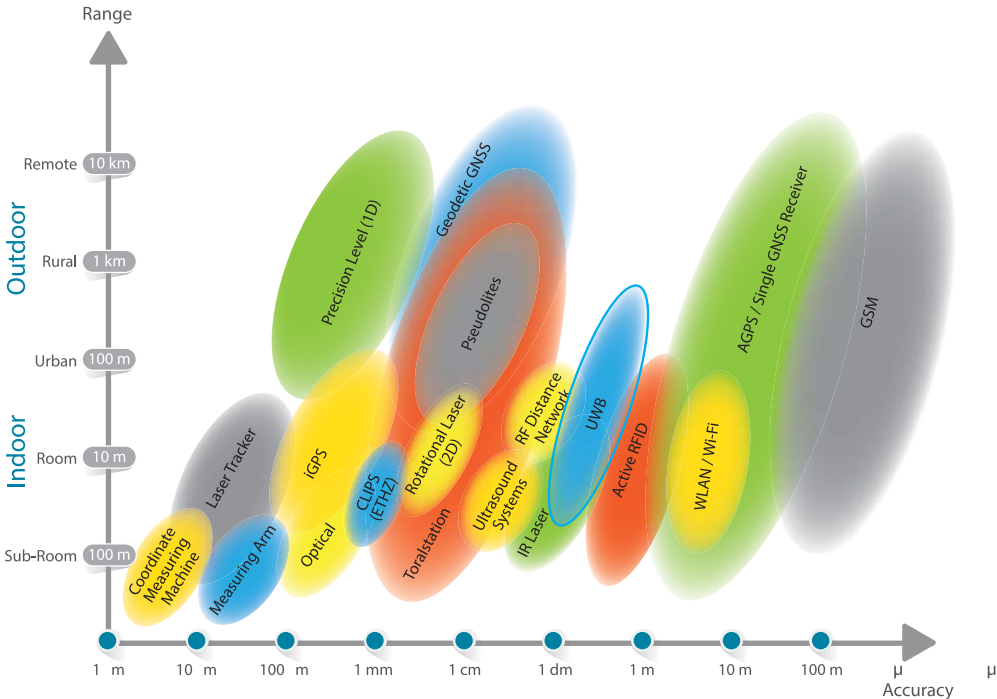
Cost of hardware and installation
No civil work is required. Thus the cost of our appliance is much lower than the nearest competitor

Confidence in the localisation results.
With TrueSEEN™ UWB solution achieve 10 to 30cm accuracy

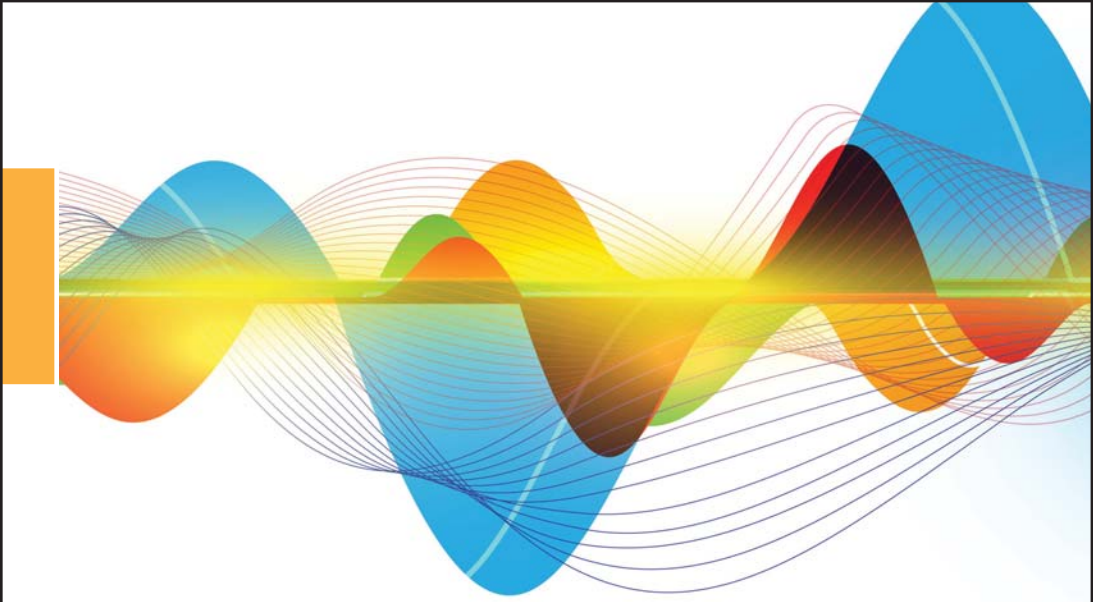
Introduction to Ultra-Wide Band Radio Frequency Technology

An Insight into RTLS Technology

Real-Time Locating Systems have become the ideal solution for businesses under continuous pressure to stay ahead of their competition by enabling them to improve their workflow, enhance operational efficiencies, and increase production. This is done by using radio frequency (RF) signals as the communication medium to track and locate assets and people in real-time. The things being tracked have a tag attached, with its own unique ID number. Receivers are then attached to fixed reference points in buildings or outside areas and receive wireless signals from the tags.



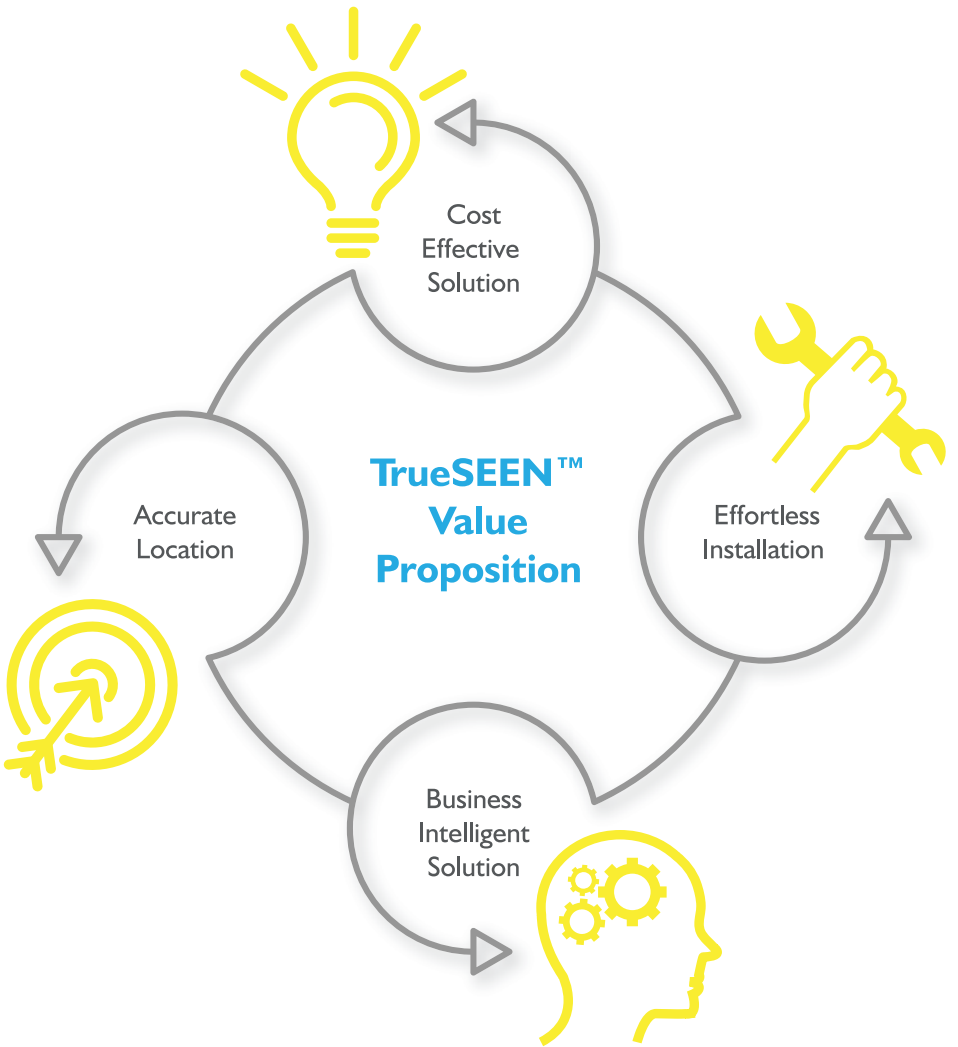
Graphic by Rainer Mautz



This data is then transferred to a centralized server which converts it into meaningful business information accessible via workstation, or mobile device. Continuous communication between the system and the things being tracked not only allows users to know their precise current location, but also where they have been or, in some instances, what they have done. This empowers decision-makers with the data to make important decisions and solve pressing problems in the fastest time possible.

The most pervasive example of an RTLS is GPS. The problems begin when you go indoors. However, GPS doesn't work indoors so all the tracking and location functionality that GPS provides suddenly disappears. But long before the advent of GPS people across a broad range of industries were examining their business processes and they began to realize that with accurate location information they could, in many cases, transform those businesses or at the very least make considerable improvements in costs, service and profits.

Since then people have been searching for reliable, accurate location technology that could be applied to their business process.



TrueSEEN™ Features

Fully wireless solution

No need for cabling to implement the solution

All the math happens inside the hardware

The system artificial intelligence is based on integrated mathematical operations done in the hardware of its components

No need for calibration

No need to do calibration for anchors to get the right and accurate distance between them

Using MEMS sensor fusion

Micro-electromechanical sensors (MEMS) to get data through tags

World's smallest tag with all sensors built-in

TrueSEEN™ tags were developed to undertake advanced functions using integrated CPU and MEMS

Lowest standby current

Industry lowest standby current of 80nA

AES-256 encryption

On-the-fly data encryption for all data transfer between anchors, tags and back-end system

Highest update rate

Up to 2,500 updates per minute

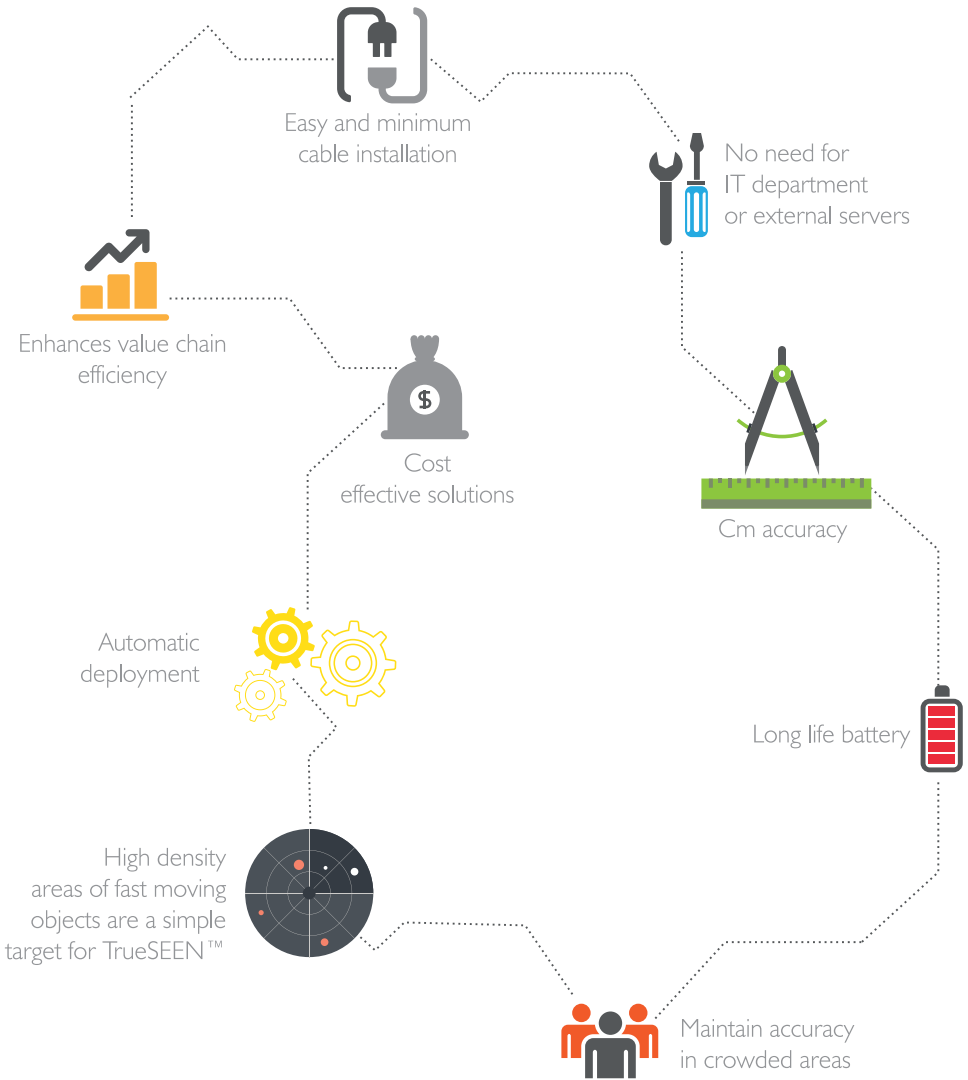
Continuous signal quality and strength evaluation

WE INTRODUCE INTERNET OF THINGS TO THE MARKET

Plug & play solutions are being designed & built according to the best industrial standards

Available to be implemented to your business & processes in NO-TIME

TrueSEEN™ Advantages



Our RTLS solutions bring a new level of efficiency, ROI and experience to enterprises with diverse applications

Our TrueSEEN™ solutions are also ideal for remote locations because there is no wiring or cabling to set up, and calibration is also done automatically. This means installation is fast and easy and everything can be up and running in a short period of time.



How it Works

A TrueSEEN™ tag will be connected, hung or wore by your most critical corporate resources, assets and people. Each tag will have a unique identification number that will be activated once it is assigned. The tag is equipped with highly-sensitive sensors that will transmit real-time signals to the installed receiver, which will record the actual progress of individuals and objects to identify their exact location and have bi-directional communication. This enables direct communication with personnel via the tag built-in screen with text, sound notification and vibrating ability.

Reduce Risk in Emergency Situations

In emergency situations every second can make a difference. With our intelligent automation solution you can make sure your staff and equipment are located and ready for action in the fastest time possible. This means you can make the work of your staff easier and take care of your customers and visitors with the best level of care. So you can improve overall workflow, levels of security and customer service... and build an even greater reputation for your business!

Powered by



About MayzBXL:

MayzBXL is an innovative solutions company, established in 2015, that specialises in IoT. We provide IoT solutions such as an UWB RF application allowing customers to Track, Monitor, Report & Control any movable item. We also provide a unique breakthrough formula in the disinfection-tech world providing a valuable solution enhancing quality of life.

The MayzBXL network offers its end-users needed project skills, the best practices & unique expertise while ensuring the availability of required local support and service to sustain a successful implementation and experience. Our team & local partners of relevant industries work closely together to offer clients thorough vision and practical solutions that meet client expectations.

Now It's Your Turn!

Are you interested in how our TrueSEEN™ can transform the way you manage your facility's assets and personnel, to optimize your workflow, provide your staff and customers with greater care and give you happier and more productive staff?

MayzBXL
J. E. Mommaertslaan 22, 1831 Diegem,
Belgium
Email: info@mayzbxl.be
Tel: +32 244 570 20
Fax: +32 244 570 21
www.mayzbxl.be